

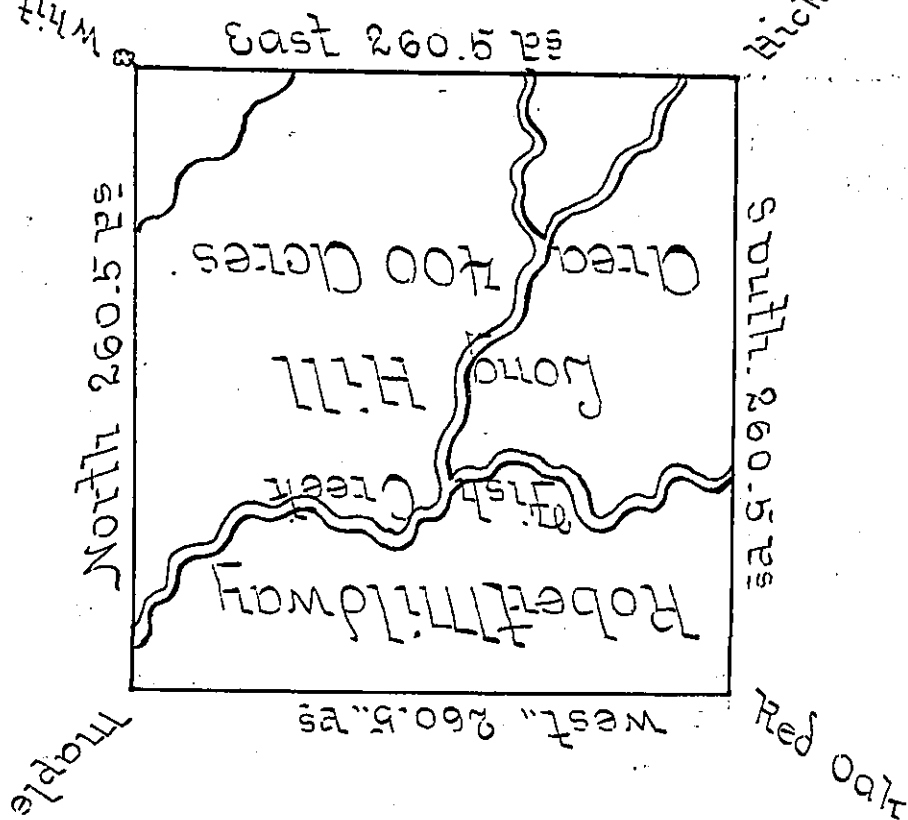
Rich^d Tompkins

White oak Beginning

Hickory

Ad^d Stephen Richmond

Ad^d John Thomas



Ad^d Abraham Clarke

The Above is a Draught of a Survey made 4th Day of Febr^y 1851
 In pursuance of a Warrant granted to Robert Mildway
 Dated the 25th Day of Oct^r 1784 Situate on a Branch of
 Fish Crick in Washington County Called Long Hill
 Containing four Hundred Acres with Usall Allowance
 of 6 p^{er} Cent for Roads ~

J. W. Hoge U.S.

Do John Lukens Esq^r Sur^v-Gen^l

*IN TESTIMONY that the above is a copy of the original remaining on file in
 the Department of Internal Affairs of Pennsylvania, made
 conformably to an Act of Assembly approved the 16th day of
 February, 1833, I have hereunto set my Hand and caused
 the Seal of said Department to be affixed at Harrisburg,
 this — second — day of — July — 1901. —*

James W. Hoge
 Secretary of Internal Affairs.